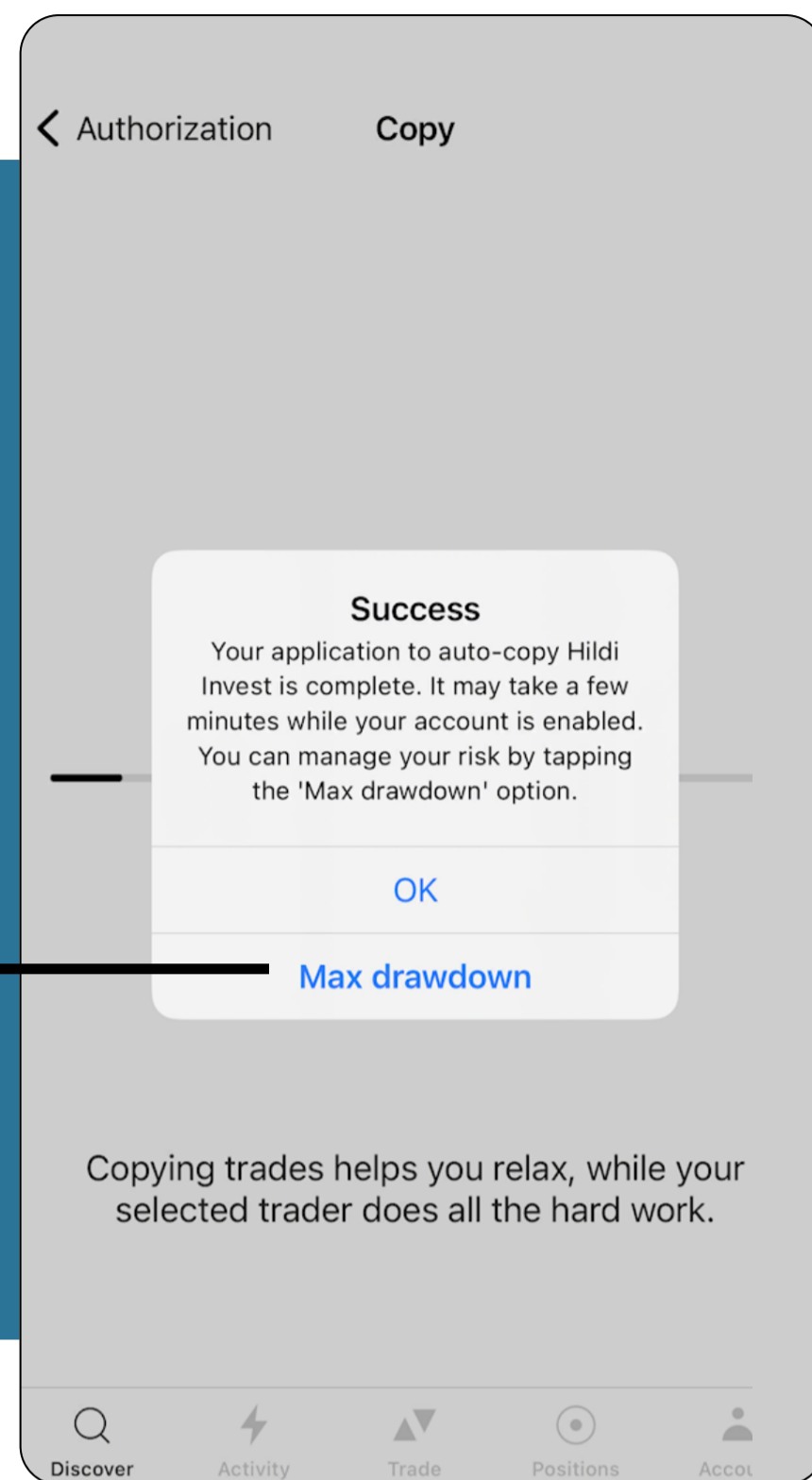
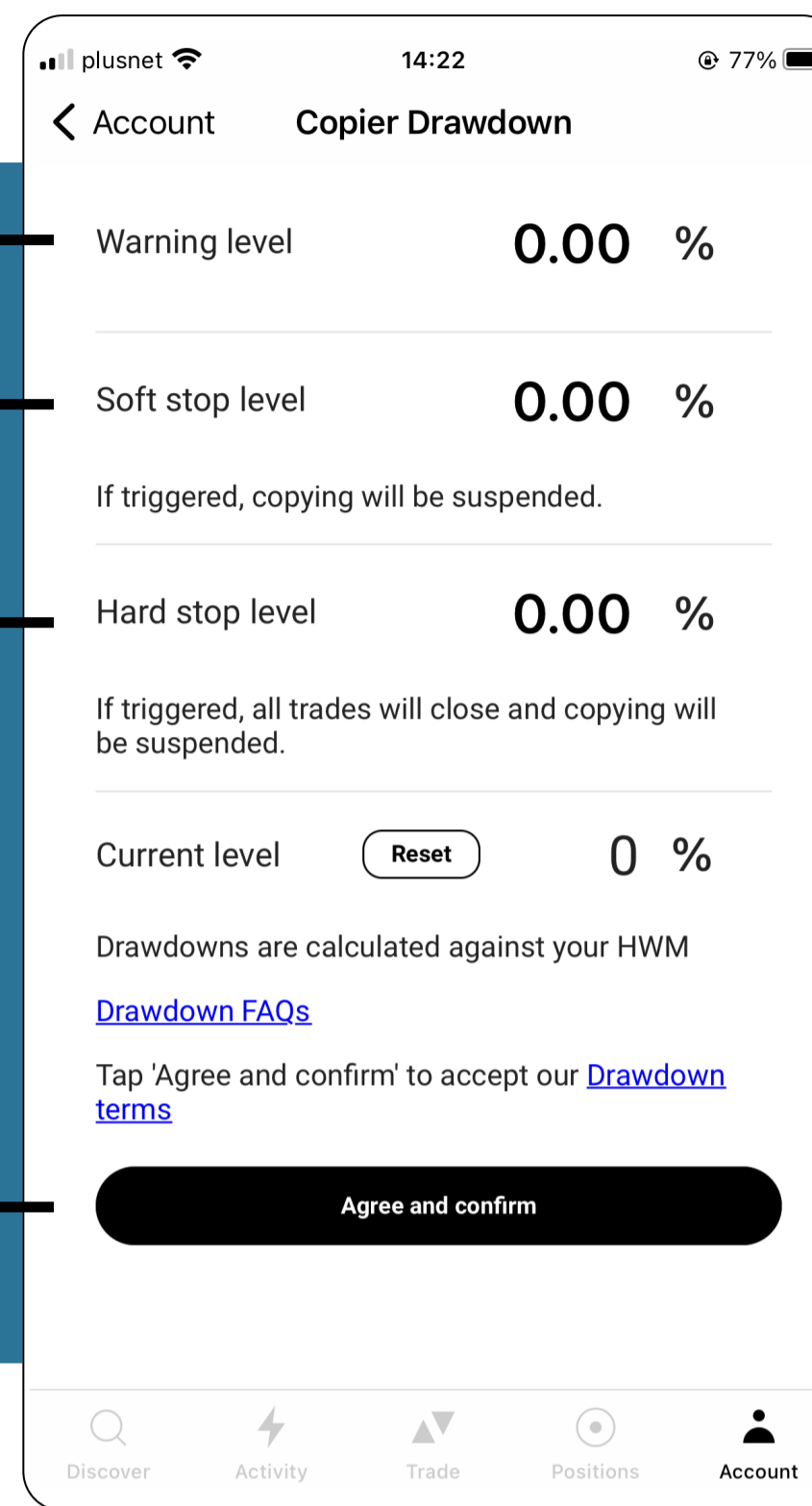


## Set Drawdown



01

Select **Max drawdown**, after copying a signal



02

Set warning level - sends an alert when triggered

03

Set soft stop - stops any new copy trade instructions

04

Set hard stop - closes all related open copy trades

05

Select **Agree and confirm**

### Troubleshooting ☹

1. Warning level must be less than soft stop and soft stop must be less than hard stop
2. Drawdown is set to your equity level NOT your balance
3. If you reset your drawdown, 0% will equal the equity at the time of the reset. There is no need to adjust your other levels
4. **Max drawdowns will track your growth in your equity, i.e. if your equity increases the % levels set will be in line with the increased equity value**